

FlashRunner HS

High-Speed, Distributed System for In-System Programming and Pre-Programming

User's Manual

Revision 1.3 — January 2021



Copyright © 2019 SMH Technologies
DC11100

We want your feedback!

SMH Technologies is always on the lookout for new ways to improve its Products and Services. For this reason feedback, comments, suggestions or criticisms, however small, are always welcome.



Our policy at SMH Technologies is to comply with all applicable worldwide safety and EMC/EMI regulations. Our products are certified to comply with the European New Approach Directives and the CE mark is applied on all our products.

This product as shipped from the factory has been verified to meet with requirements FCC as a CLASS A product.



In a domestic environment, this product may cause radio interference in which case the user may be required to take adequate prevention measures.

Attaching additional wiring to this product or modifying the product operation from the factory default as shipped may effect its performance and cause interference with other apparatus in the immediate vicinity. If such interference is detected, suitable mitigating measures should be taken.

SMH Technologies

E-mail (general information): info@smh-tech.com

E-mail (technical support): support@smh-tech.com

Web: <http://www.smh-tech.com>

Important

SMH Technologies reserves the right to make improvements to FlashRunner, its documentation and software routines, without notice. Information in this manual is intended to be accurate and reliable. However, SMH Technologies assumes no responsibility for its use; nor for any infringements of rights of third parties which may result from its use.

SMH TECHNOLOGIES WILL NOT BE LIABLE FOR DAMAGES RESULTING FROM LOSS OF DATA, PROFITS, USE OF PRODUCTS, OR INCIDENTAL OR CONSEQUENTIAL DAMAGES, EVEN IF ADVISED OF THE POSSIBILITY THEREOF.

Trademarks

SMH Technologies, SMH Technologies Logo are trademarks of SMH Technologies.

All other product or service names are the property of their respective owners.

Contents

Contents 3

Index of Figures 5

1 Before Starting 6

- 1.1 Important Notice to Users 6
- 1.2 Safety 6
- 1.3 EMC immunity 7
- 1.4 Getting Technical Support 8
- 1.5 Additional Documentation 8

2 Overview 9

- 2.1 What is FlashRunner HS? 9
 - 2.1.1 *FlashRunner HS Control Unit* 10
 - 2.1.2 *FlashRunner HS Active Module* 12
 - 2.1.3 *FlashRunner HS Control Unit link* 16

Package Checklist 17

- 2.2 Hardware Overview 18
 - 2.2.1 *Power Supply* 18
 - 2.2.2 *ATE Control Connector* 18
 - 2.2.3 *LAN Connector* 19
 - 2.2.4 *USB Connector* 19
 - 2.2.5 *ISP Connectors* 19
 - 2.2.6 *LEDs* 19

Programming Drivers and Licenses 20

- 2.2.7 *Installing New Licenses* 20
- 2.3 Upgrading the Firmware 21

3 System Setup 22

- 3.1 Overview 22
- 3.2 Software Setup 22
- 3.3 Hardware Setup 22
 - 3.3.1 *Interfacing with your Test/Programming equipment* 23
 - 3.3.2 *Connecting Control unit to Active Module* 23
 - 3.3.3 *Connecting to the Host PC System* 23
 - 3.3.4 *Powering Up* 23
 - 3.3.5 *Setting Up LAN Settings* 24

4 Connectors 25

- 4.1 Overview 25
- 4.2 ATE Control Connector 25
- 4.3 USB Connector 27
- 4.4 ISP/PP Connector 28

5 Technical Specifications 33

- 5.1 Absolute Maximum Ratings 33
- 5.2 DC Characteristics and Functional Operating Range 34
- 5.3 AC Characteristics 36
- 5.4 Physical and Environmental Specifications 38

Index of Figures

Figure 1: FlashRunner HS Control Unit-Active Module architecture	10
Figure 2: FlashRunner HS Control Unit.....	10
Figure 3: FlashRunner HS eMMC Active Module with right-angle device connector.....	13
Figure 4: FlashRunner HS GP4 Active Module with right-angle device connectors	15
Figure 5: USB type C connectors	16
Figure 6: side view of FlashRunner HS Control Unit with LAN connector, ..	18
Figure 7: Control Interface connector - Right Angle, 20-position, 2-row, 1.27mm pitch	26
Figure 8: Control Interface connector - pin numbering.....	26
Figure 9: ISP/PP connector – Right Angle, 30-position, 2-row, 1.27mm pitch	28
Figure 10: ISP/PP connector – Vertical, 30-position, 2-row, 1.27mm pitch .	28
Figure 11: ISP/PP connector – pin numbering	29
Figure 12: FlashRunner HS eMMC Active Module with right-angle device connectors (top view)	30
Figure 13: FlashRunner HS eMMC Active Module with vertical device connectors (top view)	30
Figure 14: FlashRunner HS GP4 Active Module with right-angle device connectors (top view)	32
Figure 15: FlashRunner HS GP4 Active Module with vertical device connectors (top view)	32

1 Before Starting



Note: *updated version of FlashRunner HS Software is available on SMH Technologies website. (www.smh-tech.com). Please check it out before continuing reading this documentation.*

1.1 Important Notice to Users

While every effort has been made to ensure the accuracy of all information in this document, SMH Technologies assumes no liability to any party for any loss or damage caused by errors or omissions or by statements of any kind in this document, its updates, supplements, or special editions, whether such errors are omissions or statements resulting from negligence, accidents, or any other cause.

1.2 Safety



Note: *Keep FlashRunner HS always in a well-ventilated area in order to prevent product overheating, which could affect product performances and, if maintained for long time, it could damage product hardware components.*

FlashRunner HS is a low-voltage device. However, when integrating it inside an automatic test equipment or when interfacing it with other systems, take all precautions in order to avoid electrical shocks due to, for example, different ground references.

Make all connections to the target system before applying power to the instrument.

To protect FlashRunner HS against electrostatic discharge (ESD), always connect yourself to ground (e.g. via wrist straps) when handling the instrument.

Always store FlashRunner HS inside an antistatic bag when not in use.



Disclaimer: *when integrating FlashRunner HS please pay attention to place it in a well-ventilated area to avoid overheating related damages.*

FlashRunner HS has been designed to reach 90 °C (194 °F) in normal operating conditions over its ends.

1.3 EMC immunity and Fail-safe Recovery

FlashRunner HS has been designed to be immune to electromagnetic interference. FlashRunner HS functionalities include operating with external target devices (*e.g. serial memories, microprocessors...*).

To avoid any issue during the interaction with target devices and to guarantee task reliability, FlashRunner HS is able to correctly detect **critical fault conditions** and take suitable mitigating measures such as *fail-safe state* and *functional reset procedure*.

1.4 Getting Technical Support

SMH Technologies is continuously working to improve FlashRunner HS firmware and to release programming algorithms for new devices. SMH Technologies offers a fast and knowledgeable technical support to all of its customers and is always available to solve specific problems or meet specific needs.

To get in touch with SMH Technologies, please refer to the contact information below.

Phone: +39 0434 421111

Fax: +39 0434 639021

Technical Support: support@smh-tech.com

1.5 Additional Documentation

This user's manual provides information about how to setup FlashRunner HS and its hardware characteristics.

For information about FlashRunner HS commands and their syntax, please refer to the FlashRunner Programmer's Manual, included (in PDF format) in FlashRunner setup.

2 Overview

2.1 What is FlashRunner HS?

FlashRunner HS is a multi-board distributed system designed for high-speed multi-device true-parallel Pre-Programming and In-System Programming. It represents the natural evolution of the FlashRunner 2.0 technology. FlashRunner HS has been designed to program eMMC memories, NAND memories, microcontrollers and serial memories. This means:

- Extremely fast programming (the fastest in-system programming system on the market);
- Standalone operations for easy ATE integration
- Brand new Graphical User Interface focused on Setup, Production and Security features
- Multi-board distributed system to guarantee programming signal integrity even in case of high-speed operations.

FlashRunner HS is composed by a single-board central unit named FlashRunner HS Control Unit (FR HS CU) and by up to 8 single-board peripheral units named FlashRunner HS Active Module (FR HS AM). The peripheral units are intended to be placed in the near proximity of the target device. Control Unit provides data, commands and power supply to Active Module through an USB type-C cable.

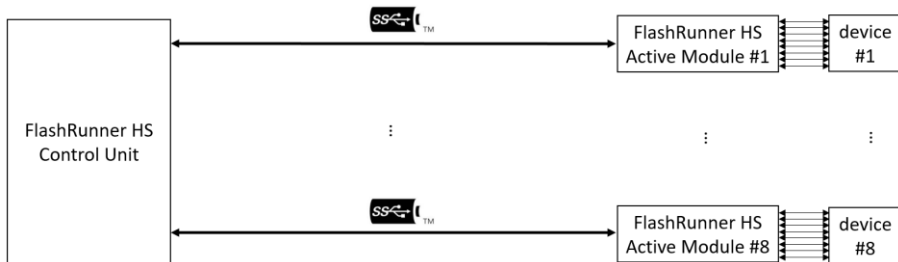


Figure 1: FlashRunner HS Control Unit-Active Module architecture

2.1.1 FlashRunner HS Control Unit

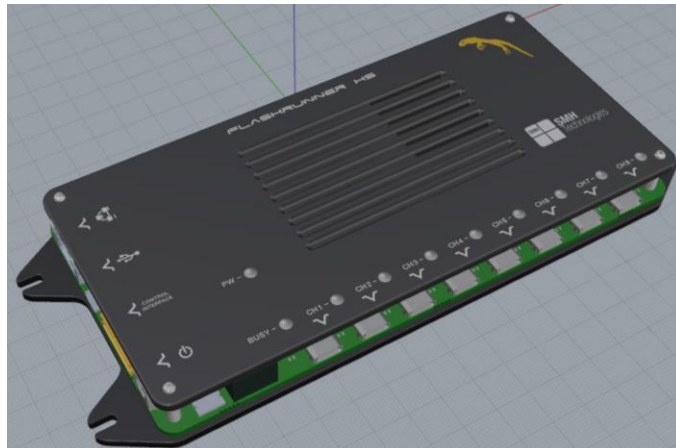


Figure 2: FlashRunner HS Control Unit

FlashRunner HS Control Unit is equipped with 8 USB type-C ports to connect up to 8 FlashRunner HS Active Modules.

General features

- up to 8 connection to as many Active Modules;
- easy ATE integration;
- standalone operations;
- controllable by ATE through LAN, USB, or parallel control lines;
- support most ISP/PP protocols (BDM, JTAG, DAP, SPI, QSPI, SWD, I2C, MON, ICC, SCI, UART, etc.);
- highly modular, flexible, fully configurable;
- robust design for production environments.

Hardware features

- LAN Communication Interface (10/100/1000Mbps IEEE 802.3-compliant Ethernet transceiver);
- Digitally isolated¹ USB-UART communication interface;
- Digitally isolated ATE parallel interface for standalone operations;
- 8 USB type-C ports to connect as many peripheral boards;
- Intel SOC FPGA with 800MHz dual-core ARM Cortex-A9 hard processor system (HPS) with support for symmetric and asymmetric multiprocessing;
- 1 GB on-board RAM DDR3 memory;
- Micro SD Card reader (up to 256 GB);
- 256 GB on-board eMMC memory;
- On-board timekeeper and calendar for time-stamped log file;

Software features

- Linux based operating system;
- FlashRunner HS WorkBench: friendly Graphical User Interface (Windows, Linux and Mac compatible)
- Controllable by any host system through a terminal utility and simple ASCII protocol;

¹ performance characteristics, in terms of isolation, superior to optocoupling

- Up to 32 hardware-selectable projects in Standalone Mode, unlimited software-selectable projects in Host Mode;
- Interface Library DLL to control the instrument from within user written applications;
- Optional customer binary file cryptography to ensure antipiracy protection
- Log file and production report file;
- Erase, blank check, program, read, verify, oscillator trimming, etc.

2.1.2 FlashRunner HS Active Module

FlashRunner HS Active Module board is intended as a peripheral unit of FlashRunner HS Control Unit. Its compact and very small form factor allows to place it in the near proximity of the target device. Data, commands and power supply are provided by Control Unit through a single USB type-C cable.

FlashRunner HS Active Module is composed by:

- USB type-C port to be connected with FlashRunner HS Control Unit;
- one, two or four ISP/PP device connectors to communicate with the devices to be programmed;
- power conversion section to supply the board and to provide programmable voltages to the output.

FlashRunner HS Active Module is available in five different model:

- FlashRunner HS eMMC Active Module;
- FlashRunner HS Dual eMMC/Parallel NAND Active Module;
- FlashRunner HS Single General Purpose Active Module.
- FlashRunner HS Dual General Purpose Active Module.
- FlashRunner HS Quad General Purpose Active Module.

Different model of FlashRunner HS Active Modules may be connected to a FlashRunner HS Control Unit to obtain a mixed programming system.

FlashRunner HS eMMC1 Active Module

FlashRunner HS eMMC Active Module has been specifically designed for eMMC memory device programming (1-bit, 4-bit and 8-bit data bus supported) and is characterized by the following features:

- very small form factor: 32mm x 63mm x 12mm;
- USB type-C port to be connected with FlashRunner HS Control Unit;
- one ISP/PP device connector (Right-Angle or Vertical, 30-position, 2-row, 1.27mm) to communicate with the target device:
 - 12 digital bidirectional communication lines (with 6 ground lines);
 - cutting-edge digital line driver to improve performance;
 - programmable IOs voltage and main power line (range 1.2V – 3.3V @ up to 300mA);
 - programmable auxiliary power line (range 1.2V – 5.5V @ up to 300mA);
 - external relay power line (15V) and command line;
- power conversion section to supply the board and to provide programmable voltages to the output;
- output power lines voltage and current continuous monitoring.

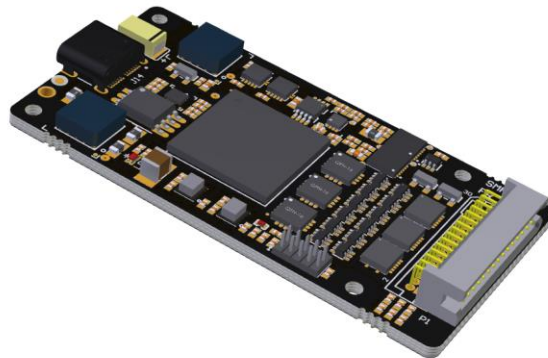


Figure 3: FlashRunner HS eMMC Active Module with right-angle device connector

FlashRunner HS eMMC2/NAND Active Module

FlashRunner HS Dual eMMC/NAND Active Module has been specifically designed for eMMC memory device programming (two devices at the same time, 1-bit, 4-bit and 8-bit data bus supported) and for NAND flash memory device programming (8-bit, 16-bit data bus supported). It is characterized by the following features:

- very small form factor: 64mm x 63mm x 12mm;
- USB type-C port to be connected with FlashRunner HS Control Unit;
- two ISP/PP device connectors (Right-Angle or Vertical, 30-position, 2-row, 1.27mm) to communicate with the one NAND target device or with two eMMC devices; each connector has:
 - 12 digital bidirectional communication lines (with 6 ground lines);
 - cutting-edge digital line driver to improve performance;
 - programmable IOs voltage and main power line (range 1.2V – 3.3V @ up to 300mA);
 - programmable auxiliary power line (range 1.2V – 5.5V @ up to 300mA);
 - external relay power line (15V) and command line;
- power conversion section to supply the board and to provide programmable voltages to the output;
- output power lines voltage and current continuous monitoring.

FlashRunner HS GP2/GP4 General Purpose Active Module

FlashRunner HS GP2/GP4 General Purpose Active Module has been designed for general purpose devices programming (up to 4-bit data bus) and is characterized by the following features:

- very small form factor:
 - 40mm x 63mm x 12mm (GP2)
 - 80mm x 63mm x 12mm (GP4)
- USB type-C port to be connected with FlashRunner HS Control Unit;
- Two/four ISP/PP device connectors (Right-Angle or Vertical, 20-position, 2-row, 1.27mm) to communicate with the device to be programmed; for each one of them:
 - 8 digital bidirectional communication lines (with 4 ground lines);
 - programmable IOs voltage and main power line (range 1.65V – 5.5V @ up to 200mA);
 - programmable auxiliary power line (range 5.5V – 12.5V @ up to 200mA);
 - external relay power line and command line;
- power conversion section to supply the board and to provide programmable voltages to the output;
- output power lines voltage and current continuous monitoring.



Figure 4: FlashRunner HS GP4 Active Module with right-angle device connectors

2.1.3 FlashRunner HS Control Unit link

FlashRunner HS Control Unit and FlashRunner HS Active Modules are connected through a USB 3.1 Gen1 SuperSpeed type-C cable with the following features:

- USB type-C symmetric flippable connector at both side;
- bidirectional high speed differential link (up to 3.2 Gbps);
- cable length up to 3 meters;
- power supply line (up to 20V, up to 3A);



Figure 5: USB type C connectors

Package Checklist

FlashRunner HS Control Unit package include the following items:

Table 1: FlashRunner HS Control Unit Package Checklist

Qty.	Description
1	FlashRunner HS Control Unit
1	Ethernet cross cable 2 meter RJ45
1	USB 2.0 cable 1.8 meter (type-A to type-B micro)
1	15V 90W AC/DC Wall Switching Power Adapter
1	3-Year Warranty Sheet
1	FR_HS_CU Pinout Reference
1	FR_HS_CU Quick Start Guide
1	FR_HS_CU Connection Reference Document

FlashRunner HS Active Module package include the following items:

Table 2: FlashRunner HS Active Module Package Checklist

Qty.	Description
1	FlashRunner HS Active Module
1	USB 3.1 Gen1 SuperSpeed cable 1.5 meter (type-C to type-C)
1	3-Year Warranty Sheet
1	FR_HS_AM Pinout Reference
1	FR_HS_AM Quick Start Guide
1	FR_HS_AM Connection Reference Document

2.2 Hardware Overview

2.2.1 Power Supply

FlashRunner HS Control Unit is powered through 15V power supply connected to DC power jack. FlashRunner HS Active Module is powered by Control Unit through a USB type-C cable.

2.2.2 ATE Control Connector

ATE Control Connector, on FlashRunner HS Control Unit, is used by an ATE system in order to control FlashRunner HS instead of communicating with USB port or LAN port.



Figure 6: side view of FlashRunner HS Control Unit with LAN connector, USB control port, ATE control connector and power jack.

Through the Control Interface, it is possible:

- to select a project (up to 32 selection);
- to start a project;
- to check project state;
- to check channels programmer state.

For further details please refer to chapter 5.

2.2.3 LAN Connector

LAN Connector is used to communicate with host PC system. Use provided cross cable to connect FlashRunner HS Control Unit with your PC. For more information, please refer to chapter 2.2.3 and to related documentation on FlashRunner HS Programmer's Manual in order to correctly setup your host PC system.

2.2.4 USB Connector

Alternatively, communication with the host PC can be done with the micro-B USB connector. Use the provided USB cable to connect FlashRunner HS Control Unit with your PC. For more information, please refer to chapter 4.3 and to related documentation on FlashRunner HS Programmer's Manual in order to correctly setup your host PC system.

2.2.5 ISP Connectors

ISP/PP device connector, on FlashRunner HS Active Module, allows to connect the system programmer to the target device. For further information, please refer to section 4.4.

2.2.6 LEDs

On FlashRunner HS Control Unit, the following LEDs are available:

- **POWER:** the Control Unit is turned on;
- **STATUS:** shows system status (green: ok, yellow: warning, red: error);
- **CHANNEL 1 to 8 :** shows programming result (green: programming done successfully or programming system ready to run, yellow: programming in progress, red: programming failed; off: remote Active Module not recognized).

On FlashRunner HS Active Module, only one LED is available:

- **CHANNEL STATUS:** shows programming result (green: programming done successfully or programming system ready to run, yellow: programming in progress, red: programming failed).

Programming Drivers and Licenses

FlashRunner HS includes programming drivers for several devices. In order to program a specific device, however, a specific license file for that device, that family or that silicon producer must be purchased.



Note: *FlashRunner HS comes already preinstalled with the license(s) you specified at the moment of purchase. You can purchase additional licenses at any future moment.*

Programming drivers and license files are stored inside FlashRunner HS Control Unit storage memory (see the FlashRunner HS Programmer's Manual for more information).

There are several type of licensing:

- Single device license: only that single device programming is enabled
- Family license: only a single device family programming is enabled
- Silicon Producer license: only a single device silicon producer is enabled

2.2.7 Installing New Licenses

When you buy an additional license for a specific device, you will get a license file (.lic);

If you ordered a new device development, you will also receive:

- A driver file (.so)

For detailed information on how to update FlashRunner HS please check FlashRunner HS Programmer's Manual.

2.3 Upgrading the Firmware

FlashRunner HS firmware can be easily upgraded using the FlashRunner HS WorkBench software. For more information, please refer to the FlashRunner HS Programmer's Manual.

3 System Setup

3.1 Overview



Note: *Keep FlashRunner HS always in a well-ventilated area in order to prevent product overheating, which could affect product performance and, if maintained for long time, it could damage product hardware components.*

This chapter will explain how to set up FlashRunner HS for the first time. The new FlashRunner HS WorkBench project Wizard allow an easy and fast system setup.

When moving FlashRunner HS to the production environment, you can take full advantage of the FlashRunner HS WorkBench GUI Production Tool (Host mode) or let the instrument to be controlled through the “ATE Control” interface (Standalone mode). For more information about Standalone mode and Host mode, see the FlashRunner HS Programmer’s Manual.

3.2 Software Setup

Please refer to “System Setup/Upgrade” chapter of FlashRunner HS Programmer’s Manual.

3.3 Hardware Setup

To set up FlashRunner HS, you must follow the steps below with the following order:

- Interface FlashRunner HS Active Module with your test/programming equipment;

- Connect FlashRunner HS Active Module to FlashRunner HS Control Unit;
- Connect FlashRunner HS Control Unit to host PC system (if you use it in Host Mode);
- Provide power to FlashRunner HS Control Unit;
- Set up LAN settings (if you use the Ethernet connection);

3.3.1 Interfacing with your Test/Programming equipment

Build one or more ISP/PP cables to connect FlashRunner HS Active Module connector to your target board. Wire up all the required connections (power, oscillator, ISP/PP signals) to target microcontrollers using PinMap tool (for more details please check related chapter on FlashRunner HS Programmer's Manual).

3.3.2 Connecting Control unit to Active Module

Connect at least one FlashRunner HS Active Module to FlashRunner HS Control Unit through the provided USB type-C cable. FlashRunner HS Active Module comes with a proper USB type-C cable.

3.3.3 Connecting to the Host PC System

You can connect FlashRunner HS Control Unit to the host system through either the USB or LAN port.

FlashRunner HS Control Unit comes with a USB cable and an Ethernet cross cable to connect directly to a host PC.

3.3.4 Powering Up

Power up FlashRunner HS Control Unit by connecting included power supply to DC plug connector.

3.3.5 Setting Up LAN Settings

If you connected FlashRunner HS Control Unit to the host PC using the Ethernet connection, you need to set up the FlashRunner HS Control Unit IP address. To learn how to set up the FlashRunner HS Control Unit address, please refer to the FlashRunner HS Programmer's Manual.

4 Connectors

4.1 Overview

FlashRunner HS Control Unit may be connected to the programming/testing system through:

- ATE Control parallel connector (20-position, 2-row, 1.25mm pitch, MALE);
- additionally, a micro type-B USB or an Ethernet connectors are available to allow a full control by ATE system.

FlashRunner HS eMMC Active Module may be connected to the eMMC memory device to be programmed through:

- ISP/PP connector (30-position, 2-row, 1.25mm pitch, male, vertical or right angle).

4.2 ATE Control Connector

ATE Control Connector is used to communicate with the host system and for integration with automatic programming/testing equipment (ATE).



Note: *all control signals are ground-referenced to GND_I (separated from HS Control Unit common GND) and power-referenced to 5V_I_FUSE (both obtained with an isolated DC/DC converter). This allows a host system to safely communicate with FlashRunner HS Control Unit even when the target boards have different ground reference compared to the host system's (and it's not possible to connect them together).*



Figure 7: Control Interface connector - Right Angle, 20-position, 2-row, 1.27mm pitch

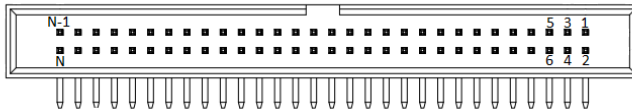


Figure 8: Control Interface connector - pin numbering

A typical sequence of commands given through the ATE Control Interface is listed in the following:

- drive PRJ_SEL[4..0] input signals to select up to 32 different projects previously stored into FlashRunner HS;
- if the programmer is not BUSY, drive the START_PRJ input signal to trigger the project start;
- verify BUSY to check if the project execution is completed;
- read the state of the channels at the end of the programming sequence using CH_INDEX[4..0], FAIL_CH, PASS/FAIL_CH and VALID_CH.

Table 3: ATE Control Connector Signals

Pin #	Signal Name	Input/Output	Description
1	PRJ_SEL[0]	I	Project selection 0 (referenced to GND_I)
2	CH_INDEX[0]	I	Channel Index 0 (referenced to GND_I)
3	PRJ_SEL[1]	I	Project selection 1 (referenced to GND_I)
4	CH_INDEX[1]	I	Channel Index 1 (referenced to GND_I)
5	PRJ_SEL[2]	I	Project selection 2 (referenced to GND_I)
6	CH_INDEX[2]	I	Channel Index 2 (referenced to GND_I)

Pin #	Signal Name	Input/Output	Description
7	PRJ_SEL[3]	I	Project selection 3 (referenced to GND_I)
8	CH_INDEX[3]	I	Channel Index 3 (referenced to GND_I)
9	PRJ_SEL[4]	I	Project selection 4 (referenced to GND_I)
10	CH_INDEX[4]	I	Channel Index 4 (referenced to GND_I)
11	START_PRJ	I	Selected Project START (referenced to GND_I, active low)
12	FAIL_CH	O	FAIL on selected channel (referenced to GND_I)
13	GND_I	-	Isolated GND
14	PASS/FAIL_CH	O	PASS/FAIL on selected channel (referenced to GND_I)
15	BUSY	O	Selected Project BUSY (referenced to GND_I, active low)
16	VALID_CH	O	Channel PASS and PASS/FAIL valid signal (referenced to GND_I)
17	GND_I	-	Isolated GND
18	GND_I	-	Isolated GND
19	5V_I_FUSE	-	5V output (output, fuse-protected, referenced to GND_I)
20	5V_I_FUSE	-	5V output (output, fuse-protected, referenced to GND_I)

4.3 USB Connector

The USB micro type-B connector can be used to communicate with the ATE system.



Note: *USB signals are ground-referenced to GND_USB (separated from HS Control Unit common GND and from GND_I).*

4.4 ISP/PP Connector

ISP/PP connector, on FlashRunner HS Active Module, is featured by several input/output communication lines, power lines and relay command lines. On FlashRunner HS Single/Dual eMMC – NAND Active Module is available in vertical (Samtec TFM-115-11-L-D) and right-angle format (Samtec TFM-115-01-L-D-RA).

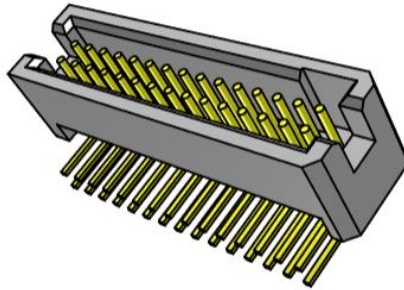


Figure 9: ISP/PP connector – Right Angle, 30-position, 2-row, 1.27mm pitch

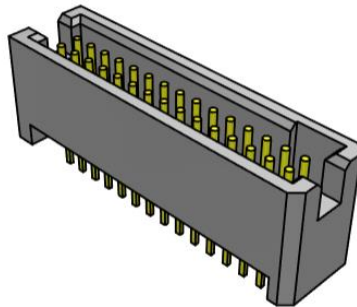


Figure 10: ISP/PP connector – Vertical, 30-position, 2-row, 1.27mm pitch

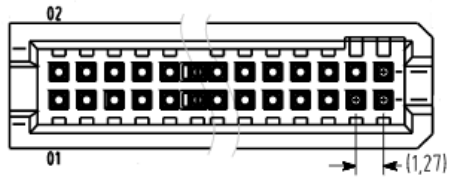


Figure 11: ISP/PP connector – pin numbering

Table 2: ISP/PP Connector Signals for FlashRunner HS eMMC Active Module

Pin #	Signal Name	Description
30	VPROG0	Programmable voltage 0
29	GND	Ground
28	VPROG1	Programmable voltage 1
27	GND	Ground
26	GND	Ground
25	GND	Ground
24	DIO_0	Digital IO 0 Signal
23	DIO_1	Digital IO 1 Signal
22	DIO_GND_0_1	Ground DIO_0, DIO_1
21	DIO_2	Digital IO 2 Signal
20	DIO_3	Digital IO 3 Signal
19	DIO_GND_2_3	Ground DIO_2, DIO_3
18	DIO_4	Digital IO 4 Signal
17	DIO_5	Digital IO 5 Signal
16	DIO_GND_4_5	Ground DIO_4, DIO_5
15	DIO_6	Digital IO 6 Signal
14	DIO_7	Digital IO 7 Signal
13	DIO_GND_6_7	Ground DIO_6, DIO_7
12	DIO_8	Digital IO 8 Signal
11	DIO_9	Digital IO 9 Signal
10	DIO_GND_8_9	Ground DIO_8, DIO_9
9	DIO_10	Digital IO 10 Signal
8	DIO_11	Digital IO 11 Signal
7	DIO_GND_10_11	Ground DIO_10, DIO_11
6	GND	Ground
5	GND	Ground
4	CH_RLY	Relay command line
3	CH_RLY_GND	Relay command line Ground
2	PWR_RLY	Relay Power supply (15V)
1	PWR_RLY	Relay Power supply (15V)

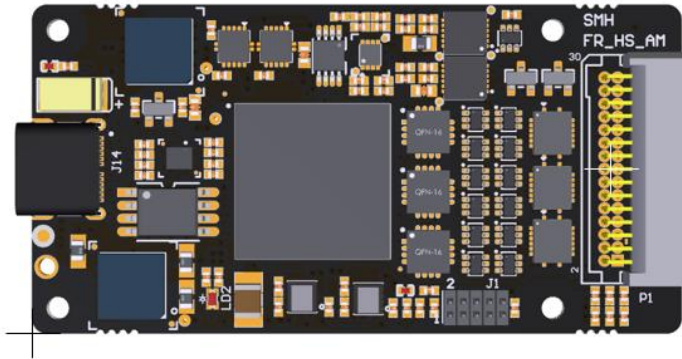


Figure 12: FlashRunner HS eMMC Active Module with right-angle device connectors (top view)

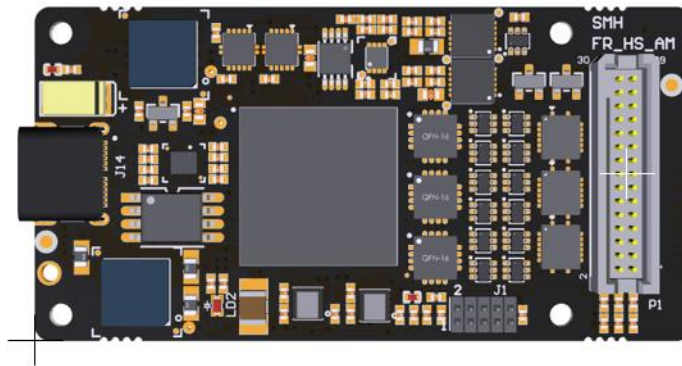


Figure 13: FlashRunner HS eMMC Active Module with vertical device connectors (top view)

Item	X [mm]	Y [mm]
Left-Bottom corner	0.00	0.00
Top-Right corner	63.00	32.00
Connector P1	56.14	16.00

On FlashRunner HS GP2/GP4 General Purpose Active Module is available in vertical (Samtec TFM-110-11-L-D) and right-angle format (Samtec TFM-110-01-L-D-RA).

Table 5: ISP/PP Connector Signals for FlashRunner HS General Purpose Active Module

Pin #	Signal Name	Description
20	VPROG0	Programmable voltage 0
19	GND	Ground
18	VPROG1	Programmable voltage 1
17	GND	Ground
16	DIO_0	Digital IO 0 Signal
15	DIO_1	Digital IO 1 Signal
14	DIO_GND_0_1	Ground DIO_0, DIO_1
13	DIO_2	Digital IO 2 Signal
12	DIO_3	Digital IO 3 Signal
11	DIO_GND_2_3	Ground DIO_2, DIO_3
10	DIO_4	Digital IO 4 Signal
9	DIO_5	Digital IO 5 Signal
8	DIO_GND_4_5	Ground DIO_4, DIO_5
7	DIO_6	Digital IO 6 Signal
6	DIO_7	Digital IO 7 Signal
5	DIO_GND_6_7	Ground DIO_6, DIO_7
4	CH_RLY	Relay command line
3	CH_RLY_GND	Relay command line Ground
2	PWR_RLY	Relay Power supply (15V)
1	PWR_RLY	Relay Power supply (15V)

Item	X [mm]	Y [mm]
Left-Bottom corner	0.00	0.00
Top-Right corner	63.00	80.00
Connector P1_C1	56.20	69.39
Connector P1_C2	56.20	50.86
Connector P1_C3	56.20	29.14
Connector P1_C4	56.20	10.61

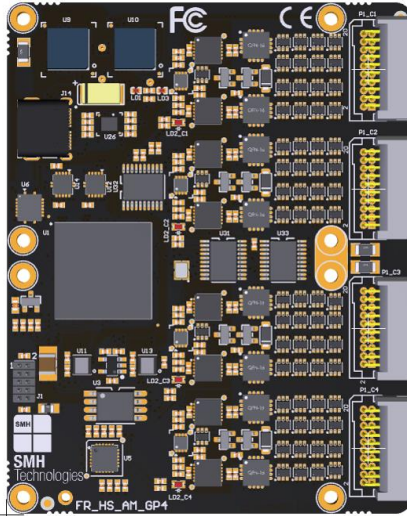


Figure 14: FlashRunner HS GP4 Active Module with right-angle device connectors (top view)

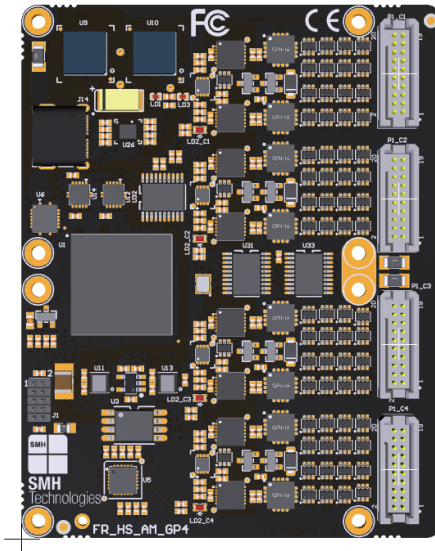


Figure 15: FlashRunner HS GP4 Active Module with vertical device connectors (top view)

5 Technical Specifications

5.1 Absolute Maximum Ratings

Table 6: Absolute Maximum Ratings

Parameter	Value
“POWER” Connector	
Supply voltage on line POWER (reference GND)	+15V
“ATE CONTROL” Connector	
Maximum input voltage on lines START, SEL[4..0], SG[1..0]	-2V to +20V
Maximum current on lines BUSY, PASS, FAIL	±10mA
“ISP GROUP” Connectors – Single/Dual eMMC Active Module	
Maximum input voltage on lines DIO[11..0]	-0,5V to +4,6V
Maximum current on lines DIO	±12mA
Maximum current on line VPROG0	300 mA
Maximum current on line VPROG1	300 mA
“ISP GROUP” Connectors – Single/Dual/Quad General Purpose Active Module	
Maximum input voltage on lines DIO[11..0]	-0,5V to +6,5V
Maximum current on lines DIO	±32mA
Maximum current on line VPROG0	300 mA
Maximum current on line VPROG1	300 mA
“Relay Barrier”	
Coil Supply Voltage	15V
“RLY_ON” signal Voltage	3.3V
Maximum current on lines RLY_ON	±24mA

5.2 DC Characteristics and Functional Operating Range

Table 7: DC Characteristics and Functional Operating Range

Parameter	Condition	Value		
		Min	Typ	Max
“ATE CONTROL” Connector				
V _{IL} (input low voltage) on lines START_PRJ, PRJ_SEL[4..0]		0V	-	0.8V
V _{IH} (input high voltage) on lines START_PRJ, PRJ_SEL[4..0]		2.4V	-	15V
V _{OL} (output low voltage) on lines BUSY, PASS/FAIL_CH, FAIL_CH, VAILD_CH	I _{OL} = 4mA	-	-	0.8V
V _{OH} (output high voltage) on lines BUSY, PASS/FAIL_CH, FAIL_CH, VAILD_CH		4.5V	-	5V
“ISP” Connectors – Single/Dual eMMC Active Module				
V _{IL} (input low voltage) on DIO lines		-	-	0.35V _{PROG0}
V _{IH} (input high voltage) on DIO lines	Configured as digital lines	0.65V _{PROG0}	-	
V _{OL} (output low voltage) on DIO lines	Configured as digital lines, V _{PROG0} = 1.8V, I _{OL} = 8mA	-	-	0.65V
V _{OH} (output high voltage) on DIO lines	Configured as digital lines, V _{PROG0} = 1.8V, I _{OH} = -8mA	1.15V	-	-
V _{OL} (output low voltage) on DIO lines	Configured as digital lines, V _{PROG0} = 3.3V, I _{OL} = 12mA	-	-	1.15V
V _{OH} (output high voltage) on DIO lines	Configured as digital lines, V _{PROG0} = 3.3V, I _{OH} = -12mA	2.15V	-	-
I _{OH} current (source) on DIO lines	Configured as input with active pull-ups	-	3.8mA	-
V _{PROG0} output voltage		1.2V	-	3.6V
V _{PROG0} current (source)		-	-	300mA
V _{PROG1} output voltage		1.2V	-	5.5V
V _{PROG1} current (source)		-	-	300mA
“ISP” Connectors – Dual/Quad General Purpose Active Module				
V _{IL} (input low voltage) on DIO lines		-	-	0.3V _{PROG0}
V _{IH} (input high voltage) on DIO lines	Configured as digital lines	0.7V _{PROG0}	-	
V _{OL} (output low voltage) on DIO lines	Configured as digital lines, V _{PROG0} = 3.3V, I _{OL} = 24mA	-	-	0.55V
V _{OH} (output high voltage) on DIO lines	Configured as digital lines, V _{PROG0} = 3.3V, I _{OH} = -24mA	2.56V	-	-
V _{OL} (output low voltage) on DIO lines	Configured as digital lines, V _{PROG0} = 5V, I _{OL} = 32mA	-	-	0.55V
V _{OH} (output high voltage) on DIO lines	Configured as digital lines,	3.9V	-	-

Parameter	Condition	Value		
		Min	Typ	Max
	$V_{\text{PROG0}} = 5\text{V}$, $I_{\text{OH}} = -32\text{mA}$			
I_{OH} current (source) on DIO lines	Configured as input with active pull-ups	-	3.8mA	-
VPROG0 output voltage		1.65V	-	5.5V
VPROG0 current (source)		-	-	300mA
VPROG1 output voltage		5.5V	-	13.5V
VPROG1 current (source)		-	-	300mA
“POWER” Connector				
Supply voltage		14.5V	-	15.5V
Power consumption		-	-	5A



Note: *Keep FlashRunner HS Control Unit and Active Modules always in a well-ventilated area in order to prevent product overheating, which could affect product performance and, if maintained for long time, it could damage product hardware components.*

5.3 AC Characteristics

Table 8: AC Characteristics HS Active Module General Purpose

Parameter	Condition		Value		
			Min	Typ	Max
t _{RISE} on DIO lines when configured as digital output push-pull	V _{PROG0} = 1.8V	Load: 2K Ω /15pF	2.1ns	-	15.5ns
	V _{PROG0} = 3.3V		0.7ns	-	5.8ns
	V _{PROG0} = 5V		0.7ns	25ns	4.4ns
t _{FALL} on DIO lines when configured as digital output push-pull	V _{PROG0} = 1.8V	Load: 2K Ω /15pF	2ns	-	12.6ns
	V _{PROG0} = 3.3V		0.8ns	-	5ns
	V _{PROG0} = 5V		0.7ns	-	4ns
t _{RISE} on line VPROG0	V _{PROG0} = 0-1.8V	Load: 15 Ω /10mF	-	10ms	-
	V _{PROG0} = 0-3.3V	Load: 22 Ω /10mF	-	15ms	-
	V _{PROG0} = 0-5.5V	Load: 22 Ω /10mF	-	20ms	-
t _{FALL} on line VPROG0	V _{PROG0} = 1.8-0V	Load: 10mF	-	300ms	-
	V _{PROG0} = 3.3-0V		-	350ms	-
	V _{PROG0} = 5.5-0V		-	350ms	-
t _{RISE} on line VPROG1	V _{PROG1} = 0-3V	Load: 10 Ω /1mF	-	1.3ms	-
	V _{PROG1} = 0-5V	Load: 47 Ω /1mF	-	1.8ms	-
	V _{PROG1} = 0-13.5V	Load: 94 Ω /1mF	-	13ms	-
t _{FALL} on line VPROG1	V _{PROG1} = 3-0V	Load: 1mF	-	18ms	-
	V _{PROG1} = 5-0V		-	30ms	-
	V _{PROG1} = 13.5-0V		-	45ms	-

Table 9: AC Characteristics HS Active Module Single/Dual eMMC - NAND

Parameter	Condition		Value		
			Min	Typ	Max
t_{RISE} on DIO lines when configured as digital output push-pull	$V_{\text{PROG0}} = 1.2\text{V}$	Load: $2\text{K}\Omega//15\text{pF}$	-	2.5ns	-
	$V_{\text{PROG0}} = 1.8\text{V}$		0.1ns	-	3ns
	$V_{\text{PROG0}} = 3.3\text{V}$		0.1ns	-	2.4ns
t_{FALL} on DIO lines when configured as digital output push-pull	$V_{\text{PROG0}} = 1.2\text{V}$	Load: $2\text{K}\Omega//15\text{pF}$	-	2.5ns	-
	$V_{\text{PROG0}} = 1.8\text{V}$		0.1ns	-	3ns
	$V_{\text{PROG0}} = 3.3\text{V}$		0.1ns	-	2.4ns
t_{RISE} on line VPROG0	$V_{\text{PROG0}} = 0-1.8\text{V}$	Load: $15\Omega//10\text{mF}$	-	10ms	-
	$V_{\text{PROG0}} = 0-3.3\text{V}$	Load: $22\Omega//10\text{mF}$	-	15ms	-
t_{FALL} on line VPROG0	$V_{\text{PROG0}} = 1.8-0\text{V}$	Load: 10mF	-	300ms	-
	$V_{\text{PROG0}} = 3.3-0\text{V}$		-	350ms	-
t_{RISE} on line VPROG1	$V_{\text{PROG1}} = 0-3.3\text{V}$	Load: $10\Omega//1\text{mF}$	-	1.3ms	-
	$V_{\text{PROG1}} = 0-5.5\text{V}$	Load: $47\Omega//1\text{mF}$	-	1.8ms	-
t_{FALL} on line VPROG1	$V_{\text{PROG1}} = 3.3-0\text{V}$	Load: 1mF	-	18ms	-
	$V_{\text{PROG1}} = 5.5-0\text{V}$		-	30ms	-

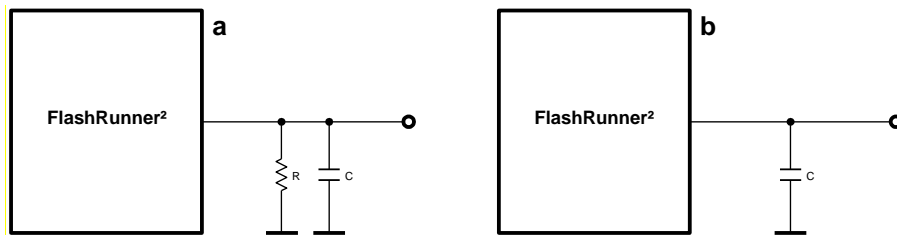


Illustration 1: Load Conditions

5.4 Physical and Environmental Specifications

Table 10: Physical and Environmental Specifications

Parameter	Value
Dimensions, HS Control Unit	170 x 83 x 19 mm
Dimensions, HS Active Module Single eMMC	63 x 32 x 12 mm
Dimensions, HS Active Module Dual eMMC/NAND	63 x 64 x 12 mm
Dimensions, HS Active Module Single General Purpose	63 x 32 x 12 mm
Dimensions, HS Active Module Dual General Purpose	63 x 40 x 12 mm
Dimensions, HS Active Module Single General Purpose	63 x 80 x 12 mm
"ISP" connectors type – HS Active Module Single/Dual eMMC/NAND	30 positions, 2 row, pitch = 1.27mm, male, vertical or right-angle
"ISP" connectors type – HS Active Module Single/Dual/Quad General Purpose	20 positions, 2 row, pitch = 1.27mm, male, vertical or right-angle
"ATE CONTROL" connector type	20 positions, 2 row, box header, pitch = 1.27mm, male
"USB" connector type	USB-B micro receptable
"LAN" connector type	RJ-45 connector
"POWER" connector type	DC Plug
Operating temperature	0-50°C
Operating humidity	90% max (without condensation)
Storage temperature	0-70°C
Storage humidity	90% max (without condensation)
EMC (EMI/EMS)	CE, FCC
SD CARD size	Up to 256 GB, by default mounts 2GB